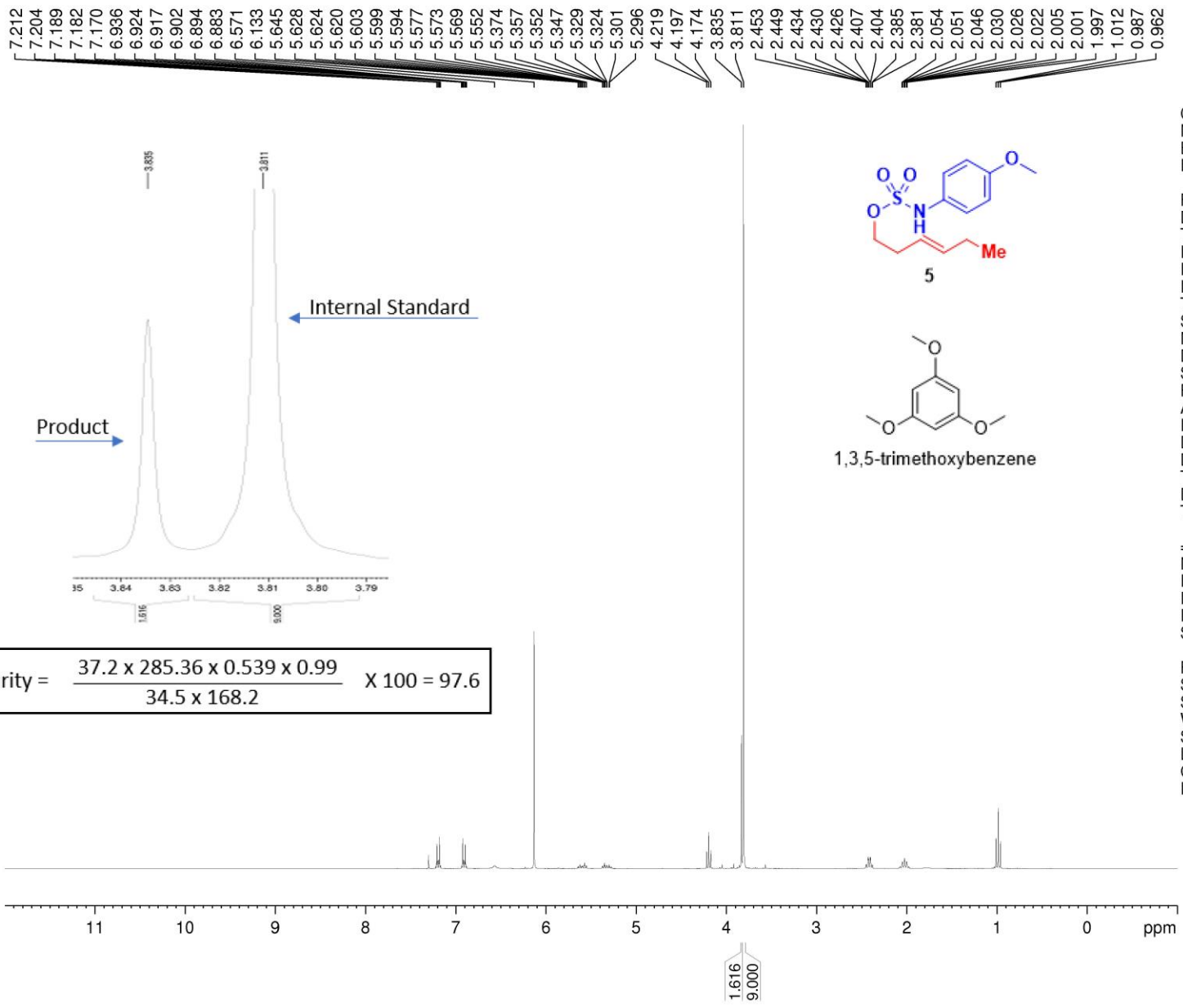


(E)-Hex-3-en-1-yl (4-methoxyphenyl)sulfate



Current Data Parameters  
 NAME Compound 5 qNMR  
 EXPNO 90  
 PROCNO 1

F2 - Acquisition Parameters  
 Date\_ 20220912  
 Time 16.06  
 INSTRUM av300  
 PROBHD 5 mm PABBO BB-  
 PULPROG zg30  
 TD 65536  
 SOLVENT CDCl3  
 NS 16  
 DS 0  
 SWH 5995.204 Hz  
 FIDRES 0.091480 Hz  
 AQ 5.4657025 sec  
 RG 256  
 DW 83.400 usec  
 DE 6.00 usec  
 TE 300.0 K  
 D1 30.00000000 sec  
 TD0 1

==== CHANNEL f1 =====  
 NUC1 1H  
 P1 15.20 usec  
 PL1 0 dB  
 PL1W 9.31909847 W  
 SFO1 300.1318008 MHz

F2 - Processing parameters  
 SI 65536  
 SF 300.1300000 MHz  
 WDW EM  
 SSB 0  
 LB 0.30 Hz  
 GB 0  
 PC 1.40

$$\text{Purity} = \frac{37.2 \times 285.36 \times 0.539 \times 0.99}{34.5 \times 168.2} \times 100 = 97.6$$